



Wexplore srl  
*Your next change*

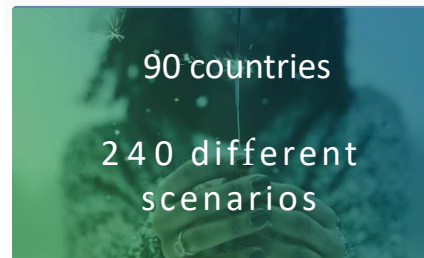
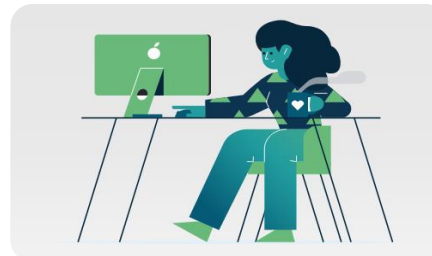
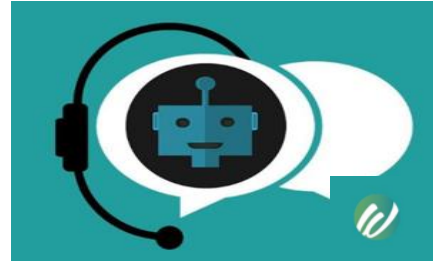


ASSOLOMBARDA  
Confindustria Milano, Monza e Brianza, Lodi

Automotive Network

## **Who we are**

We are an international HR-TECH Company: we mix a digital platform with human DNA born from a team with +30 years experience in HR and Operations. We focus on facilitating internal and team processes, improving business performance, enhancing people engagement and saving up to 50% of time spent on repetitive tasks and miscommunication . We are now present in more than 50 countries and we can rely on the experience of specialised international consultants.



90 countries

240 different scenarios

## **Product description**

A virtual consultant (VIC) providing training support, onboarding and process guidance to your people.

VIC interacts with each person through a chatbot providing country specific information, as well as practical tips to interact effectively with new colleagues. Additionally, it maps actual behaviours to enable sharing of successful practices within the organization.

## **Contacts**

[info@wexplore.eu](mailto:info@wexplore.eu)

[www.wexplore.eu](http://www.wexplore.eu)

## Who

We are an international HR-TECH Company: we mix a digital platform with human DNA born from a team of more than 30 years experience in HR and operations. We focused on facilitating internal and team processes, global effectiveness of talents to improve business performance enhance people engagement and and saving up to 50% of time spent on repetitive tasks and miscommunication . We are now present in more than 50 countries and we can rely on the experience of specialised international consultants.

## What

A virtual consultant providing training support and onboarding guidance to global talents

## How

Vic interacts with each person through a chatbot providing country specific information as well as practical tips to interact effectively with new colleagues. Additionally it maps actual behaviours to enable sharing of successful practices within the organization.