



ASSOLOMBARDA

Assolombarda for Enterprises

IDENTITY, REPRESENTATION & SERVICES





ASSOLOMBARDA

Assolombarda for Enterprises

IDENTITY, REPRESENTATION & SERVICES



Contents

Chap.1

IDENTITY AND REPRESENTATION

Chap.2

SERVICES

Chap.3

TOOLS FOR DEVELOPING AND
OPTIMISING YOUR BUSINESS

Chap.4

JOIN ASSOLOMBARDA

Identity and representation



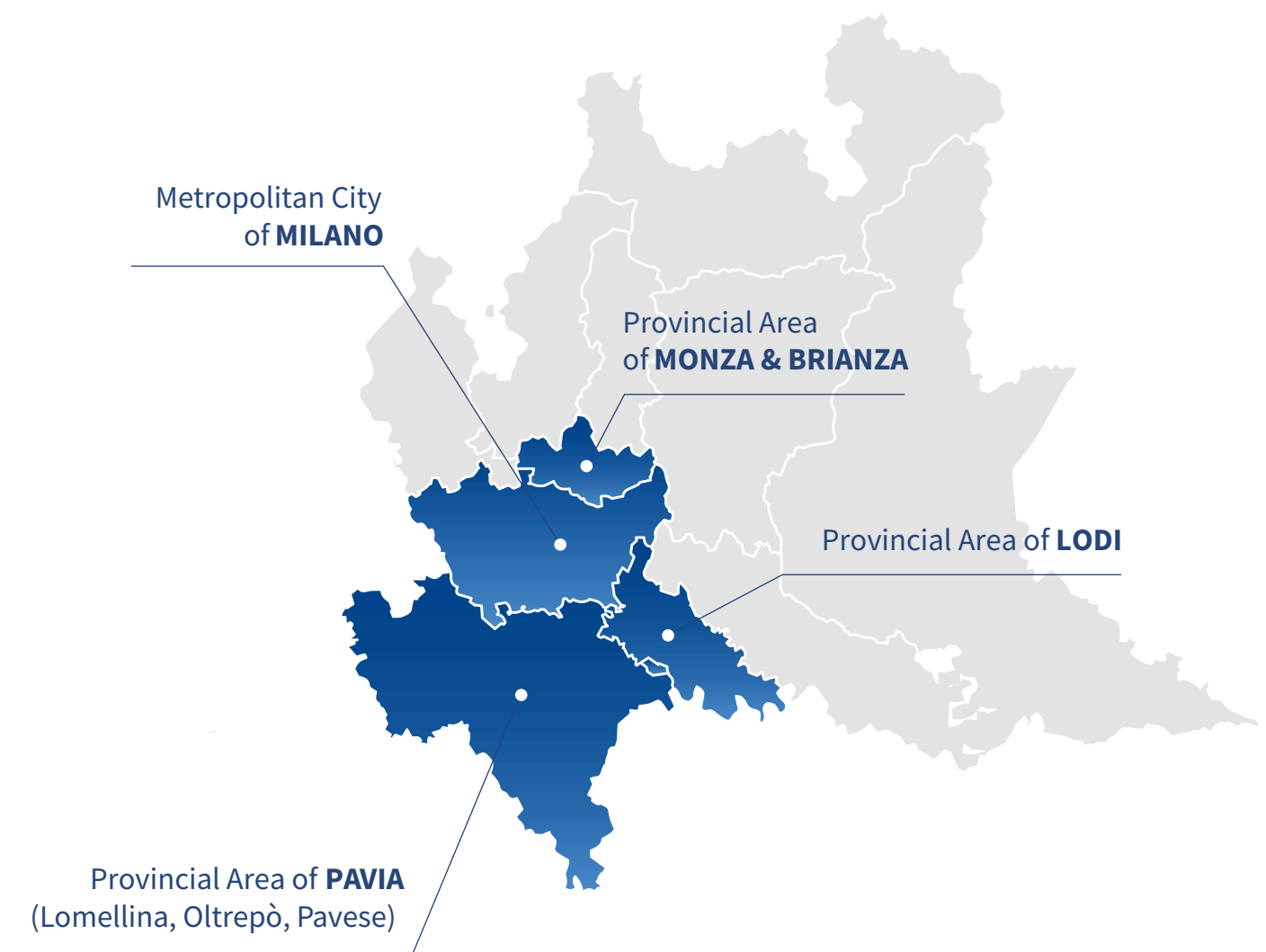
Assolombarda is

Assolombarda serves as a key ally for businesses,
shaping the future of entrepreneurship in a constantly evolving world.

It's where ideas take shape and are transformed into actionable projects.

It's the place where companies find support,
representation, advocacy, and tailored solutions.

Assolombarda is the hub for dialogue and collaboration,
fostering growth for your business and others alike.



Our mission

Our *mission is to* **facilitate the development of member Enterprises** providing support, constant updates, and training opportunities on the main questions and technical problems every Enterprise has to deal with.

We listen to the needs and safeguard the interests of member Enterprises, taking their petitions to Institutions, Public Administrations, the political and trade union worlds, and civil society.

Who we represent

For more than 100 years we have been the Association of Industrial and Services Sector Enterprises in the Metropolitan City of Milan and the Provinces of Lodi, Monza & Brianza, and Pavia and we represent more than 7,000 member enterprises.

More than

7.000

Start-ups and Italian and International
Small and Medium-Sized Enterprises
Producers of goods and services in all goods sectors

MEMBER ENTERPRISES

More than **400 thousand** 

MEMBER ENTERPRISE EMPLOYEES

What economic weight do our Enterprises have?

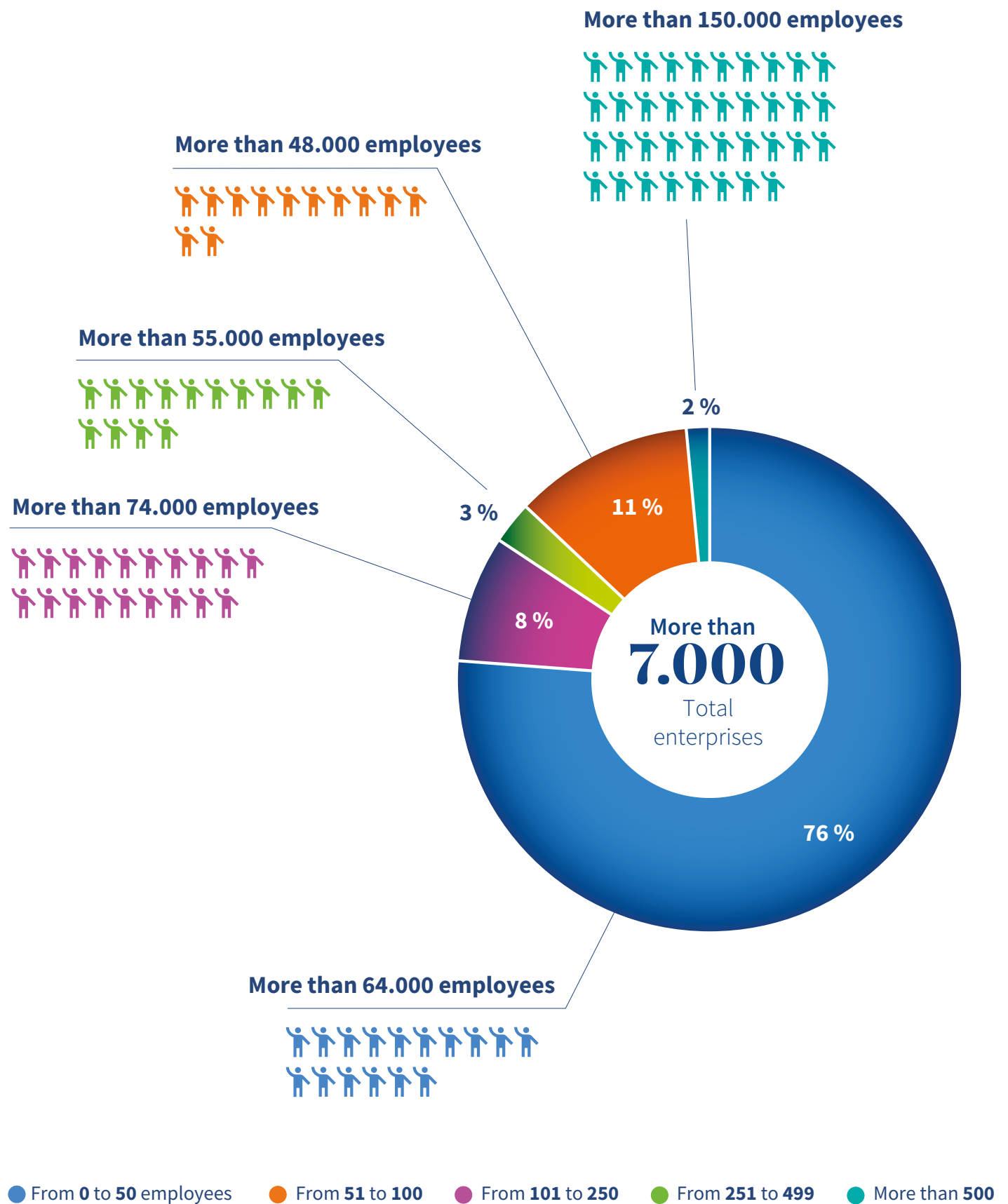
54 %

LOMBARDY
ADDED VALUE

12 %

ITALIAN
ADDED VALUE

How are our Enterprises broken down in terms of size?



Our Values

Identity

We valorise the uniqueness of each Enterprise and promote unity in the entrepreneurial system.

Representation

We defend the specific interests of members and categories, but above all, we promote projects with a general impact in favour of developing the territory.

Services

We offer professional and operational support to member Companies.

The Representation we provide

We are the voice of our Enterprises and our territory.
We represent the aspirations and interests of the Enterprises,
in all sectors, in the territories of Milan, Monza-Brianza, Lodi, and Pavia,
which are among the most advanced and competitive in Europe.
We provide a point of reference for every one of our Enterprises.

By taking part in association life - in the form of institutional, working,
networking, and socialising events - the Enterprises
discuss and share goals, matters of interest, best practices among
the members and goods categories, ideas, projects, needs for support,
and in-depth study.

Based on the input we receive, the Association launches targeted
actions and services, representing the Enterprises at all levels and in any matter.
Due to our capacity for forming a system, we facilitate activation of
projects and initiatives in the territory, in line with shared goals.
We inform Enterprises of new opportunities to be taken,
sensitising them ahead of time about strategic questions and projects.

We guide and provide a driving force, taking a leading role in public debate
and economic growth in our Country. We are socially active and promote change.
We believe in the importance of sustainable economic growth.
We talk to the new generations, open doors, and create opportunities.
We believe in the power of collaboration and efficacy of system building.
We represent, support, and encourage.

We are the voice of our Enterprises. We are the spokesperson for their interests.

We are Assolombarda

How is Assolombarda's representation expressed?

Our representation also takes the form of Group actions, which facilitate discussion on matters of common interest and grouping within the same operational setting.

The groups represent the interests of goods categories or groups across the board such as Light Industry and Young Entrepreneurs.

The aim of the Groups is to:

- 1.** Concur on attainment and dissemination among Enterprises of the strategic goals of the guidelines indicated by the Association President's programme.
- 2.** Take part in Technical Groups, set up in relation to theme-related delegations.
- 3.** Promote and consolidate association life and communication between member Enterprises.
- 4.** Interact with the other forms and components of the Association.
- 5.** Interact with trade Associations.

Our Groups

FOOD

CHEMICAL

Chemicals
Cosmetic
Therapies and Life Technologies

DESIGN & FURNITURE

ENERGY

RUBBER - PLASTIC

Packaging

INNOVATION SERVICES

Industrial Services
Professional Services
Connecting Services
Digital Services
Engineering Services

MEDIA, COMMUNICATION AND SHOW BUSINESS

Publishing and Communication
Corporate Communication Services
Entertainment

MECHATRONICS

FASHION

HEALTH

TRANSPORT, LOGISTICS AND INFRASTRUCTURES

TOURISM

Hospitality

Groups

12

Small Enterprise

Assolombarda's Small Enterprise Group gives specific relevance to small and medium-sized enterprises.

Member Enterprises that employ up to 249 people are part of this group.

The Small Enterprise group is a meeting place for member SMEs and point of reference of matters of interest to them. An 'antenna' able to pick up on the needs and criticalities of SMEs in a market that is constantly and rapidly changing.

The Small Enterprise group works to:

- 1.** Sensitise public opinion and social forces to the industrial culture and entrepreneurial spirit.
- 2.** Stimulate an awareness in SMEs of their role in the economy and in association life.
- 3.** Implement each initiative to safeguard, promote, and disseminate the values that are typical of SMEs.
- 4.** Deal with matters of interest, preparing proposals, and promoting implementation.



Scan the QR
the access
the web page
or [click here](#)

Young Entrepreneurs Group

Assolombarda's Young Entrepreneurs group is made up of those between the ages of 18 and 40, who play a managerial role within their member enterprise. The group also involves managers and entrepreneurs' children in their activities.

Historically, the Young Entrepreneurs movement takes the form of a forum for ideas, strategies and actions, that stress the role of critical awareness in the system and in society, and that promote an Entrepreneurial culture. The group was also set up to meet the need to prepare people to take on responsible roles in the association system.

Assolombarda's Young Entrepreneurs group is the most numerous of the territorial groups in Italy, with about 600 registered members.



Scan the QR
the access
the web page
or [click here](#)

Family Businesses

Given the strategic nature and particularity of this large group of enterprises that represent a significant portion of the entire association base, Assolombarda has dedicated a specific project to family businesses, which includes various initiatives, such as: a path laid out for the children of entrepreneurs (the Boss's children), a cycle of meetings to facilitate sharing and discussion between family businesses (Family Meetings), and socialising between the families (annual family dinner).

The family business desk is a tool that can be used to interact with experts in various spheres and get initial support aimed at correct management of the dynamics of family type businesses.



Scan the QR
the access
the web page
or [**click here**](#)

Family Business Desk

Network

Assolombarda is the ideal place for facilitating awareness and discussion between Enterprises and Entrepreneurs, which are essential for developing plans and ideas. For this purpose the association has come up with settings, dedicated mainly to the network between enterprises in various goods sectors and company sizes.

Assolombarda's Chains are networks set up to facilitate and incentivise contact and awareness between Enterprises in different goods sectors, when it comes to their reference market, interested to developing plans, synergies, and partnerships together, also based on business logic.

Each Chain has its Coordinator - an entrepreneur who looks after its development, gathers proposals from participating enterprises, and coordinates the work it does. Each Chain can centre its activities on one or more matters of interest.

Its main activities are networking meetings to get to know the excellence in our and other territories up close, or meetings with Buying Managers from some Companies (especially during company visits), as well as in-depth looks at matters of common interest.

Our Chains and Business Matching

AGRI-FOOD

The Agri-Food Chain brings together Enterprises in the territory known for their excellence, who are involved in bringing products from the field to the table, forming a value chain in the food sector, from raw materials through to the food we eat.

ATTRACTIVENESS

The Attractiveness Chain is made up of a network of Enterprises and Stakeholders involved in construction, information, communication, and promotion of the territories of Milan, Monza & Brianza, Lodi, and Pavia. These are enterprises that make these territories a tourist destination appreciated even more and a point of reference for Made in Italy.

AUTOMOTIVE

The Automotive Chain brings together all the Enterprises involved in the value chain of manufacturing vehicles, excellence that this Chain aims to valorise by processing projects, company missions, and targeted networking activities for the sector. This Chain organises discussions and business matching meetings, and supports and stimulates competitiveness of participating Enterprises, by organising workshops with experts in the sector.

BUILT ENVIRONMENT

The supply chain for the built environment is made up of different companies: from construction materials to electrical, water, heating systems, from home appliances to consumer electronics, from home connectivity to real estate, lighting and furniture and energy. The companies, included in the supply chain, operate at various stages of the lifecycle of a building or an infrastructure, from design to construction up to its management. The aim of the supply chain is to foster contacts between companies, through networking events and projects focused on strategic issues for the companies.

ENERGY SUSTAINABLE GLOBAL CHAIN

The Energy Sustainable Global Chain aims to reproduce the value chain related to producing, planning, and distribution of the main energy sources, including Enterprises that offer B2B services for the sector. The aim of the activities promoted by this Chain is to set up synergies and partnerships between all its components, based on a logic of the utmost transversality.

Chains



FAST MOVING CONSUMER GOODS

The Fast Moving Consumer Goods Chain includes production and distribution Enterprises in the sector, from various goods segments such as foods, home products, cosmetics, toys, publishing products, etc. These are goods normally sold with small margins on a mass market, on which the level of competition is very high. This business sector also includes new digital distribution channels, which make an ever greater contribution to the overall margin on the sales by these Enterprises.

LIFE SCIENCES

The Life Sciences Chain includes all Enterprises in the value chain of the Life Sciences Industry, a sector that has many examples of excellence in Lombardy. This network's mission is to guarantee interconnection between Enterprises, by means of meetings and planning, focussed on strategic matters, with particular reference to Digital Transformation and Innovation.

Business matching



Scan the QR
the access
the web page
or [**click here**](#)

The Business Matching Desk is a tool, designed for the Chains, that supports member companies in searches within the Assolombarda network for suppliers or partners, while respecting the free choice of the requesting enterprise.

Thanks to our extensive network, we are able to create profiles for the enterprises and cross reference the various needs, finding the partner best suited to your business.

Services



People

TRADE UNION

LABOUR, SOCIAL SECURITY
AND WELFARE

HEALTH AND SAFETY AT WORK

TRAINING
AND HUMAN CAPITAL

LOANS, FINANCE AND INCENTIVES

FISCAL

COMPANY LAW

ECONOMIC
INFORMATION

Economy



Territory

ENVIRONMENT

MOBILITY AND TRANSPORT

REAL ESTATE AND TOWN PLANNING

INTERNATIONALISATION

INDUSTRY, INNOVATION
AND QUALITY

START-UP

ENERGY



Development

People

TRADE UNION

LABOUR, SOCIAL SECURITY
AND WELFARE

HEALTH AND SAFETY
AT WORK

TRAINING
AND HUMAN CAPITAL



Trade Union

Phone: 02 58370.348/732/209

e-mail: sind@assolombarda.it

Scan the QR
the access
the web page
or [click here](#)

This service supports member companies in interpreting collective agreements, managing human resources, resolving corporate crises through the management of collective and individual disputes, while ensuring compliance with regulations and the guidelines of both association and confederation representation.

Agreements



MEAL COUPON



INCENTIVES



Labour, social security and welfare

Phone: 02 58370.213/336

e-mail: lav@assolombarda.it

Scan the QR
the access
the web page
or [click here](#)

This service provides enterprises with consultancy on labour and social security law, and contributes to defining the association's positions in relation to the matters for which it is competent. It represents entrepreneurial interests at the reference entities (INPS, INAIL, Metropolitan City, etc.).

Agreements



PERSONNEL MANAGEMENT



HEALTH AND ASSISTANCE



Scan the QR
the access
the web page
or [click here](#)

Health and safety at work

Phone: 02 58370.242

e-mail: sic@assolombarda.it

The service provides assistance in managing health and safety in the workplace and helps member companies apply the key regulations for managing all provisions related to workplace prevention. Specifically, we serve as a key point of contact with local regulatory bodies responsible for these matters, such as the Lombardy Region and the ATS (Health Protection Agencies), the Provincial Fire Departments, the Labor Inspectorate, the Prefectures, and INAIL (National Institute for Insurance against Accidents at Work.)

Agreements

-  CREDIT CARDS AND HEALTH
-  ASSISTANCE INSURANCE



Scan the QR
the access
the web page
or [click here](#)

Training and human capital

Phone: 02 58370.510

e-mail: form@assolombarda.it

This service provides enterprises with assistance and represents entrepreneurial interests in the competent forums related to schooling, university, superior technical training, ongoing training and active policies.

Agreements

-  PERSONNEL MANAGEMENT
-  MULTIMEDIA COMMUNICATION

Economy

A hand holding a pen is writing on a document. The image is overlaid with a blue and orange gradient. The word 'Economy' is written in large white letters at the top left. Below it, on the right side, are four lines of white text: 'LOANS, FINANCE AND INCENTIVES', 'FISCAL', 'COMPANY LAW', and 'ECONOMIC INFORMATION'. At the bottom right is the page number '27'.

LOANS, FINANCE
AND INCENTIVES

FISCAL

COMPANY LAW

ECONOMIC
INFORMATION



Scan the QR
for more details
on the dedicated
services and tools,
or [click here](#)

Loans, finance and incentives

Phone: 02 58370.704

e-mail: fin@assolombarda.it

This service contributes to defining the association's positions and to safeguarding members in dealings with the financial world. In addition, it adopts a consultancy, professional, and confidential approach to supporting Enterprises to optimise the capital they require for operating and developing, in terms of quantities and costs.

Agreements



CREDIT CARDS



LENDING BANK INSURANCE



Scan the QR
for more details
on the dedicated
services and tools,
or [click here](#)

Fiscal

Phone: 02 58370.267/308

e-mail: fisc@assolombarda.it

The frequent legislative amendments that have a significant impact on the life and operational status of Enterprises, give rise to the need for timely updating and operational indications of correct interpretation of the norms. The fiscal service assists member Enterprises with personalised support and the collaboration of experts. Also, by means systematic information actions, it allows Enterprises to keep up with the evolution of the normative framework, and to have the indications required to fulfil fiscal formalities.

Agreements



INCENTIVES



FUEL CARDS AND COUPONS



Scan the QR
for more details
on the dedicated
services and tools,
or [click here](#)

Company Law

Phone: 02 58370.267/308

e-mail: fisc@assolombarda.it

Companies often need to examine national, supranational, or sector-specific regulations regarding various aspects of their activities. The 'Corporate Law' service ensures member companies receive assistance, support, and information, as well as representation, with particular focus on corporate law, business crisis management, privacy, contracts, and intellectual property protection.

Agreements



ECONOMIC INFORMATION



DEBT COLLECTION FOR COMPANY SUPPLIES



Scan the QR
for more details
on the dedicated
services and tools,
or [click here](#)

Economic Information

e-mail: stud@assolombarda.it

The Research Centre produces and disseminates information and data for analysing the economic scene and labour market, providing further details on the attractiveness and competitiveness of the territory and the Enterprises. It supports the Association's strategic projects, working synergically with all the other in-house areas. In addition, it offers consultancy to members on the main economic indicators, forecast scenarios, prices and quotations for raw materials, ship chartering and air cargo. It also provides guidance for evaluating Severance Packages, work loans, and consumer price indices.

Agreements



ECONOMIC INFORMATION AND DEBT COLLECTION

Territory

An aerial photograph of a city, likely Dubai, showing a dense urban landscape with numerous skyscrapers and residential buildings. The image is overlaid with a semi-transparent blue filter, which serves as a background for the text.

ENVIRONMENT

MOBILITY
AND TRANSPORT

REAL ESTATE
AND TOWN PLANNING



Scan the QR
for more details
on the dedicated
services and tools,
or [click here](#)

Environment

Phone: 02 58370.204

e-mail: amb@assolombarda.it

This team assists enterprises with day-to-day management of environmental matters, helping them to grasp opportunities resulting from sustainable management, with a view to ecological transition. The service also provides informative paths for updating and training on environmental sustainability. The complexity and extent of the question requires continuous discussion, integration, and interrelation of skills related to environmental sustainability with those for sustainable mobility and town planning. These make it possible to develop integrated services of high value to member enterprises, and complete, interdisciplinary representation.

Agreements



COMPANY SUPPLIES



ECONOMIC INFORMATION AND DEBT COLLECTION



Scan the QR
for more details
on the dedicated
services and tools,
or [click here](#)

Mobility and Transport

Phone: 02 58370.204

e-mail: territorio@assolombarda.it

The mobility and transport team develops services and provides representation in the following areas: sustainable and innovative mobility, goods logistics, and infrastructures.

The challenge and vastness of this matter requires constant discussion, integration, and interconnection of mobility and transport related skills, with those related to environmental sustainability, town planning, and territorial competitiveness, thereby developing services and representation.

Agreements



TRANSPORT



BUYING AND HIRING CARS



Scan the QR
for more details
on the dedicated
services and tools,
or [click here](#)

Real Estate and Town Planning

Phone: 02 58370.204

e-mail: territorio@assolombarda.it

The team that deals with Company premises questions, provides services and representation of matters related to building, town planning, the real estate market, and managing company real estate.

This support to the Enterprises is provided integrated with other skills related to the service, making it possible to consider the various aspects of competitive development of the Enterprises and production areas, and to provide complete assistance and representation: mobility and accessibility, environmental sustainability, and environmental permitting.

Agreements



SHIPPING, LOGISTICS AND FILING



COMPANY SUPPLIES

Development

INTERNATIONALISATION

INDUSTRY,
INNOVATION AND QUALITY

START-UPS

ENERGY



Scan the QR
for more details
on the dedicated
services and tools,
or [click here](#)

Internationalisation

e-mail: assolombardaestero@assolombarda.it

This service supports member Enterprises in defining strategies to develop their business abroad, providing information on Countries of interest, and creating opportunities to meet and collaborate with foreign operators.

In addition, it provides consultancy on import, export and intracommunity matters, from the customs norm for being export compliance through to international contractual norms and forms of payment.

It even goes to opportunities related to digital exports and loans for growth on international markets.

Agreements



ECONOMIC INFORMATION AND DEBT COLLECTION



HOSPITALITY



Scan the QR
for more details
on the dedicated
services and tools,
or [click here](#)

Industry, Innovation and Quality

Phone: 02 58370.227

e-mail: innovazione@assolombarda.it

The service provided in relation to Industry and Innovation contributes to defining and association's positions regarding levers for company competitiveness in terms of innovation and digitalisation throughout the value chain. In addition, it assists the Enterprises and represents entrepreneurial interests in the competent settings.

Agreements



MULTI-MEDIA COMMUNICATION COMPANY



SUPPLIES



Scan the QR
for more details
on the dedicated
services and tools,
or [click here](#)

Start-up

Phone: 02 58370.531

e-mail: startupdesk@assolombarda.it

These are the most energetic, innovative, and entrepreneurial component of our industrial fabric. The Start-up service provides full support to Enterprises, accompanying them through both the initial setting up activities and the business development process. It covers all company management areas, such as: preparing a business plan, company law, patents, finance and credit, labour, social security, and many more.

Agreements



ECONOMIC INFORMATION



DEBT COLLECTION LENDING BANKS



Scan the QR
for more details
on the dedicated
services and tools,
or [click here](#)

Energy

Phone: 02 58370.431

e-mail: energia@assolombarda.it

The Energy service offers members consultancy on all energy management related matters. The association provides energy consultancy at a normative, technical, and economics level to the Enterprises, who in turn are all potential users of the services. The experts are available for in-depth energy consultancy on various levels, structured to suit the specific needs of the individual entities.

Agreements



ENERGY

Energy Purchasing Group

Every day we commit to supporting you on the question of energy, in order to find the most efficient solutions in an ever more dynamic and complex market. The normative and technological evolution offers opportunities that can be taken via specific consultation, in which Assolombarda Servizi boasts many years of experience.

Grouping together is the finest solution for increasing contracting power, and so skills are required to interpret the wholesale markets and evaluate the best procurement strategy.

Assolombarda's Buying Group's activities are based on these pillars, and it has already gained the trust of hundreds of enterprises, with polarity that is increasing year after year.

Tools for the development and optimization of your business





Assolombarda Servizi proposes operating solutions for your business to grow and for simplified management.

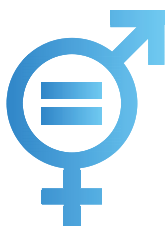
This services Company, 100% Assolombarda owned, has been supporting and safeguarding the competitiveness and development of Enterprises for more than 40 years.

Alongside the Association's consultancy and representation, it offers a wide range of personalised services based on the specific needs of each enterprise, guiding the development of complex projects.

In July 2022 Assolombarda Servizi Spa evolved into a "Benefit Company", amending its articles of association to make official its commitment to pursuing goals of mutual benefit, such as environmental and social sustainability. Benefit Companies are an innovative company type, in a context in which sustainability has fully entered the vocabulary of enterprises, institutions, and citizens. For this reason, at Assolombarda Servizi we seek to represent a virtuous model.

The sustainability areas that Assolombarda Servizi has chosen to support are:

GENDER EQUALITY



OCCUPATIONAL HEALTH AND SAFETY



MITIGATING THE ENVIRONMENTAL IMPACT





Human Resources

SECTOR AND SPECIFIC REMUNERATION BENCHMARKS

BROADBANDING

BUSINESS ACADEMY: TECHNICAL, EXECUTIVE AND SOFT SKILLS TRAINING

CHANGE MANAGEMENT COACHING

ORGANISATIONAL CONSULTANCY (PARTICULARLY FOCUSING ON FAMILY BUSINESSES AND SMEs)

EMPLOYER BRANDING

OBLIGATORY HEALTH AND SAFETY TRAINING

FLEXIBLE JOBS

PAY SERVICE AND PERSONNEL ADMINISTRATION OUTSOURCING

ATTENDANCE RECORD SERVICE OUT-SOURCING

PARTIAL FULFILMENT OF OBLIGATORY APPOINTMENT OF DISABLED BY COOPERATIVE - ART. 14

PEOPLE ASSESSMENT

PERFORMANCE MANAGEMENT

EMPLOYERS REDREES

TALENT MANAGEMENT

TEMPORARY MANAGEMENT

CHECKING CORRECT INAIL CATEGORISATION AND SUPPORT WITH RECOVERY

WELFARE AND COMPANY WELLBEING

Finance, loans and accounting

COMPANY AND PRODUCT/SERVICE BUSINESS PLAN

CAPITAL MATCHING (advisory in M&A phase)

INCENTIVE FINANCE (REGIONAL, NATIONAL AND COMMUNITY)

ADMINISTRATION AND ACCOUNTING SERVICE OUTSOURCING



ASSOLOMBARDA **SERVIZI**
SOCIETÀ BENEFIT

Safety, environment and energy

Strategy and development

ENVIRONMENTAL CONSULTANCY

HEALTH AND SAFETY CONSULTANCY

ENERGY (electricity and gas buying
group, energy audits, etc.)

MOBILITY MANAGEMENT

LEAN MANAGEMENT

QUALITY POLICIES
AND ASSISTANCE
WITH ISO CERTIFICATION/RENEWAL

SUSTAINABILITY AND CORPORATE
SOCIAL RESPONSIBILITY

COMPLIANCE AND LEGAL SERVICES

CRISIS MANAGEMENT AND BRAND REPUTATION

DIGITALISATION

INTERNATIONALISATION

HIRING CONGRESS SPACES IN
MILANO, MONZA AND LODI

SUPPORT AT ENTERPRISE MARKETING
AND COMMERCIAL FUNCTIONS

Agreements



Assolombarda has set up more than **140 agreements** that allow you to save on many cost items: meal coupons, buying and hiring cars, company supplies.

Scan the QR
the access
the web page
or [click here](#)

In addition, you can extend the benefits to your employees by activating **dedicated agreements** free of charge, for things like medical expenses, leisure activities, or travel, for example.

BUYING AND HIRING CARS



MEAL COUPONS



CREDIT CARDS AND INSURANCE



FUEL CARDS AND COUPONS



MULTI-MEDIA COMMUNICATION



ENERGY



COMPANY SUPPLIES



PERSONNEL MANAGEMENT



HOSPITALITY



INCENTIVES



ECONOMIC INFORMATION AND DEBT COLLECTION



LENDING BANKS



HEALTH AND ASSISTANCE



CONGRESS SERVICES



SHIPPING, LOGISTICS AND FILING



LEISURE ACTIVITIES



TRANSPORT



TRIPS AND TOURISM



A toolbox for your Enterprise



Assolombarda makes a toolbox available, full of tools and free of charge to members, designed to help in your day-to-day activity, to support your plans, and to extend your business boundaries.

Scan the QR
the access
the web page
or [click here](#)



SOCIAL SAFETY NETS AND ACTIVE LABOUR POLICIES

Discover the social safety nets and active labour policies that best suit your enterprise, using our guide.

Scan the QR or [click here](#)



EASY APPRENTICESHIP

Discover the apprenticeship contracts best suited to your enterprise, to add new personnel.

Scan the QR or [click here](#)



BANCOPASS

Simply click to get your economic/asset situation, and begin financial planning for your enterprise.

Scan the QR or [click here](#)



WASTEWATER TARIFF CALCULATOR

Simulate the tariff for industrial wastewater, and see how to get an economic benefit straight away.

Scan the QR or [click here](#)



INCENTIVES CHECK-UP

Check the main conditions for accessing tender processes and monitor the limits to be met to obtain public grants using our guide.

Scan the QR or [click here](#)



INSURANCE CHECK-UP

Identify and draw up a roadmap for managing the most significant risks related to your business and learn how to deal with the world of insurance cover.

Scan the QR or [click here](#)



EMPLOYMENT CONTRACTS

Discover the main employment contracts best suited to your enterprise's employment needs.

Scan the QR or [click here](#)



LOCAL FISCAL MATTERS

An information tool that can be used to analyse fiscal and local tax pressure within the Municipalities in the Milan, Lodi, Pavia and Monza & Brianza territories.

Scan the QR or [click here](#)



ENTERPRISES AND THE DISABLED

Discover the best solution for your company to meet obligatory employment of disabled and protected categories of people.

Scan the QR or [click here](#)



NEWS4YOU

Request the best incentives and financial opportunities to develop your enterprise.

Scan the QR or [click here](#)



PARTNERSHIP ENTERPRISE EUROPE NETWORK

Consult the EEN (Enterprise Europe Network) database for searching for and offering of partners for business and technological collaborations, as well as on European projects.

Scan the QR or [click here](#)



ADDITIONAL SOCIAL SECURITY

Discover the most suitable solution for additional social security and Severance Package management for your enterprise.

Scan the QR or [click here](#)



TRIANGULAR VAT

Use our virtual guide to identify the fiscal invoicing and registration formalities for triangular VAT, community, and extra-community operations.

The tool is accompanied by an exemption in e-book format.

Scan the QR or [click here](#)

**Join
Assolombarda**



Why you should join

Assolombarda is a strategically in managing and developing your Enterprise.

Here are 5 good reasons for joining the Assolombarda Community:

FOR IDENTITY AND REPRESENTATION › Assolombarda listens to and safeguards the needs and interests of member Enterprises. Our goal is to get where you cannot get to alone. We put the petitions of about 7,000 enterprises to institutions, Public Administrations, the political and trade union worlds, and civil society.

TO DEVELOP YOUR ENTERPRISE › Assolombarda implements actions and targeted services to support enterprises and their professionals. It facilitates activation of projects and initiatives in the territory and promotes and indicated new opportunities to be taken for developing your Enterprise.

FOR CONCRETE SUPPORT › With the support and assistance of more than 250 professionals, the Association concretely supports you in carrying out all your work activities, while keeping you informed at all times of new norms and market trends.

TO FORM A NETWORK › Assolombarda is, by definition, the place that most enables awareness and discussion between Enterprises and entrepreneurs. These are essential for developing and sharing projects and ideas.

TO MAKE YOUR ENTERPRISE MORE EFFICIENT › Assolombarda knows how important saving and increasing efficiency are for the sustainability of your Enterprise. That's why, besides qualified experts in the field, it also makes a range of tools available, as well as operating instruments and agreements, of use for attaining your goals.

How to join

Are you not a member of Assolombarda yet?
What are you waiting for? Join now!

For more information on how to join, contact us
at **svil@assolombarda.it** - phone **02 58370287** or
complete the form on our website accessible by scanning the QR below.



Scan the QR
complete the
form and join,
or **[click here](#)**!



ASSOLOMBARDA

svil@assolombarda.it
www.assolombarda.it

